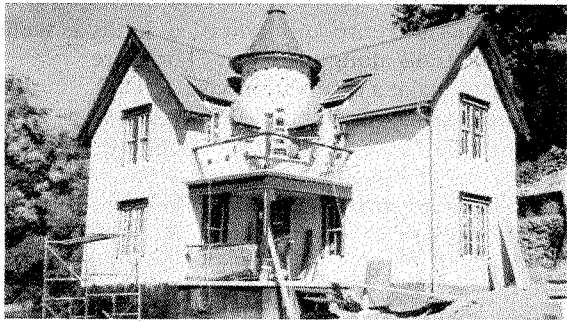


so much to do - I want to BE THERE

shampoo is enough to make you and your dog appreciate the spa like treatment. Ronnie also supplies plush towels, a big apron for you, forced air dryers, brushes and elevated claw foot tubs with hot and cold running water. Once your pooch is clean, you can reward him/her at the doggie bakery. Canine cannolis and cupcakes are a hit, but also try the bacon cheese hand pies and the carob-dipped squirrels. Ronnie is also available by appointment to groom your dog. Hours are Tuesday - Sunday 12 to 8 p.m., and Sunday 12 - 5. The Soapy Dog is located at 270 Depot Street and can be reached at 350-0333.

WANT TO LIVE ON THE RIVER?



The First of Five new Co-Operative Housing Options on Chicken Hill in the heart of the River District

Oliver's House (named after the developer's youngest son) is located on Roberts Street in the heart of the River District, and is the first of five new "Industrial Victorians". These whimsical homes are incorporating the best in construction and local craft. Kelly Prestwood, a native Asheville and self-taught metal artist, uses iron and copper flourishes in the details of the houses. The new two bedroom, two bath homes are energy efficient, with radiant heat, and pebble dash stucco exteriors.

Developer Whit Riley is also refurbishing several of the original mill houses as well as constructing in-fill properties in this very hip and funky old Cotton Mill neighborhood. Once completed, the Chicken-Hill Co-Operative will boast a communal hot tub and edible gardens.

The whole project is based on new urbanism principles and "green building" design. This new housing option in the River District, along with the housing options already developed and planned by Mountain Housing Opportunities is bringing new life and revitalizing the entire area.

For an informative look at the history of Chicken Hill, factory life, other properties for sale, and more details and floor plans for Chicken-Hill Co-Operative Housing visit www.chickenhillnc.com or call Whitt at 280-8884.

GOOD DESIGN IS WHAT IT IS ALL ABOUT

Developer Ray Quate took some old buildings on Depot Street and breathed new life and vitality into them. He even had all the commercial space leased be-

fore he started construction! His new tenants include Site Works Studios, a Landscape Architecture firm, and Greeson and Fast an interior design firm. The interiors are beautiful with walls decorated with River District Artist pottery.



SITWORK STUDIOS, PLLC, Principals - Steven Lee Johnson, ASLA and Mathew B. Sprouse, ASLA head up a professional Landscape Architecture, Land Planning and Urban Design firm. The staff of six landscape architects and land planners provide a full range of design services for clients throughout the southeast. Based in the heart of the River District, the team is experienced in large-scale master planning, urban design, individual site planning, environmental planning and fine garden design.

Jean Greeson and Richard Fast are two interior design professionals who love the business and enjoy working with clients. They have now joined forces and established an innovative new studio. With more than two decades of interior design experience, Jean continues to create with vitality and expression. Originally from Kansas City, her interiors have graced homes from California to Florida.

Richard has traveled extensively throughout Europe and the Americas on buying trips for his Fort Lauderdale antique business. An expert in artistic details, he has also served as a consultant for architects and designers specializing in the hospitality industry as well as private residences.

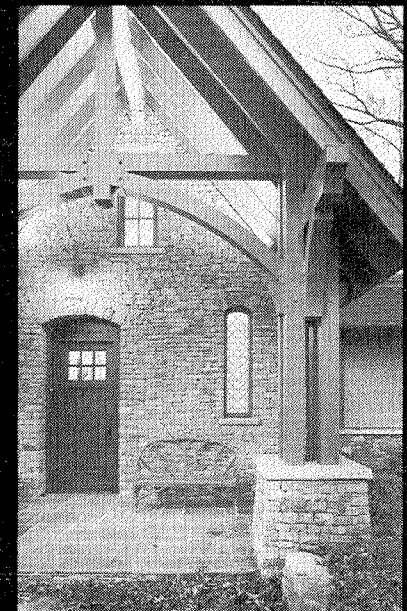
To contact SITE WORK STUDIOS call 225-4945. You can reach Greeson and Fast at 252-0400. Both Studios are located at 352 Depot Street.

WANT TO TOUR THE RIVERFRONT?

If you want to visit sites along the river don't miss the RiverLink bus tours offered twice a month. This is a free service for our members and there is \$10 charge for non-members.

We will take you to Chicken Hill as well as along the French Broad and Swannanoa Rivers for an in-depth look the history and future plans for the Wilma Dykeman RiverWay. See page 9 for details of the bus trips or visit our website at www.riverlink.org.

20 Years of Fine Design...



SAMSEL ARCHITECTS

Asheville NC 828.253.1124
www.samselarchitects.com

National Bicycle Retailer of the Year

LIBERTY BICYCLES



We Support & Appreciate RiverLink For All Of Their Efforts

1378 Hendersonville Rd, Asheville